

An aerial photograph of a city, likely Yongchuan District in Chongqing, China. The scene features a large body of water in the foreground with a traditional Chinese pagoda on an island. The city is densely packed with modern high-rise apartment buildings. The sky is bright blue with a few white clouds and a sun flare in the top left corner.

*Opportunity of the Western Development  
Future for the Lumber Industry*

Zhang Guo, director of the people's government of Yongchuan District, Chongqing



I. *Opportunity* is transient. Seize it, and  
you'll seize development.



# I. Be part of the “Great Strategy” to earn great potential for growth



Xi Jinping, the general secretary,  
visited Chongqing in 2016



His “*Two point*” definition:

Important *strategic point* of the  
Western Development

*Tie-in point* of the BRI (Belt and  
Road Initiative) and the Yangtze River  
Economic Belt

# I. Be part of the “Great Strategy” to earn great potential for growth



*Its “Three roles” in:*

*Underpinning* the effort of the Western Development in the new era

*Facilitating* the co-build of the BRI

*Showcasing* green development of the Yangtze River Economic Belt





# *Opportunity:* **New landscape in the Western Development**

**1**

**Focus on protection**

**2**

**Focus on Open-up**

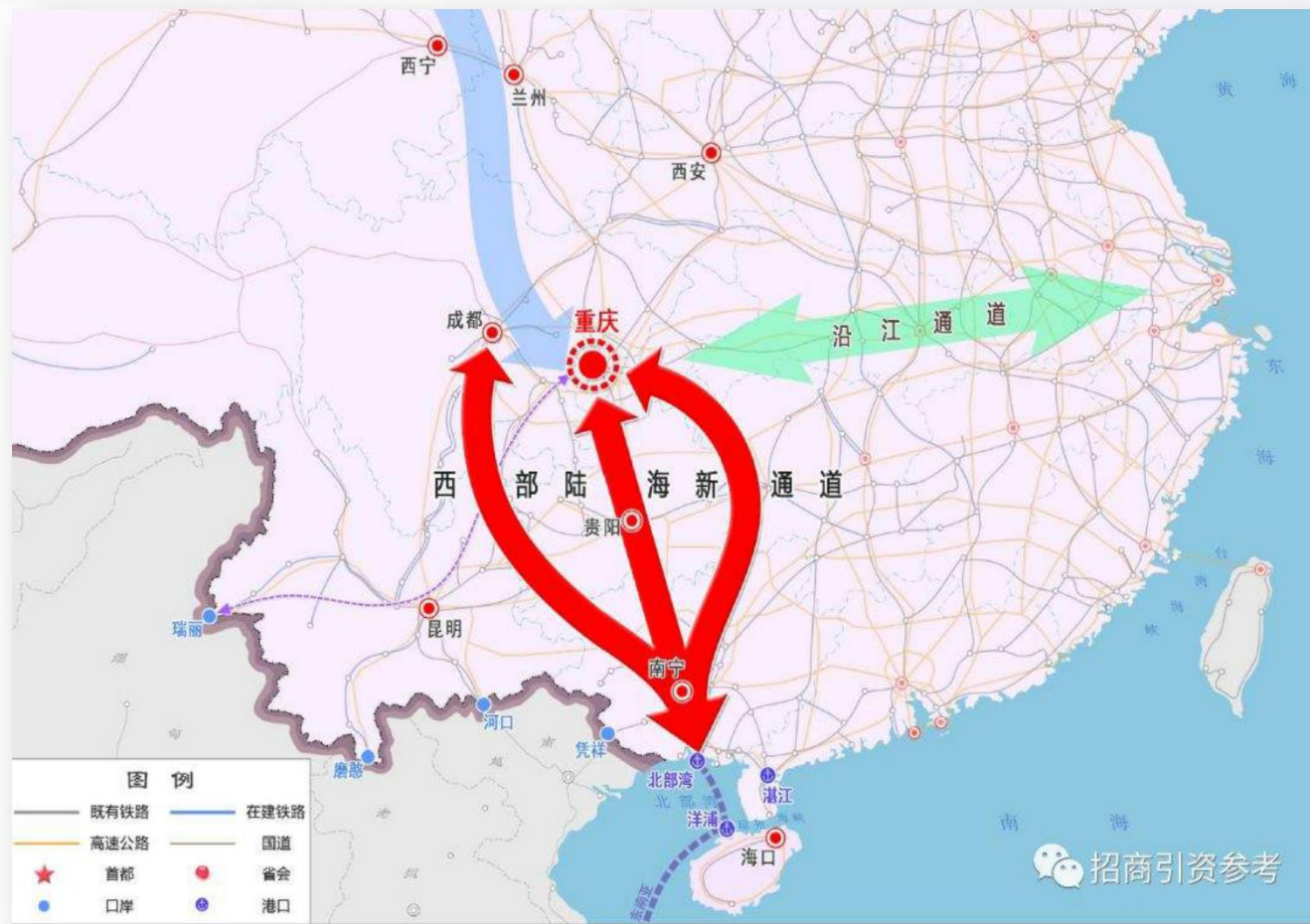
**3**

**Focus on on quality development**



# Opportunity: New Western land-sea Corridor

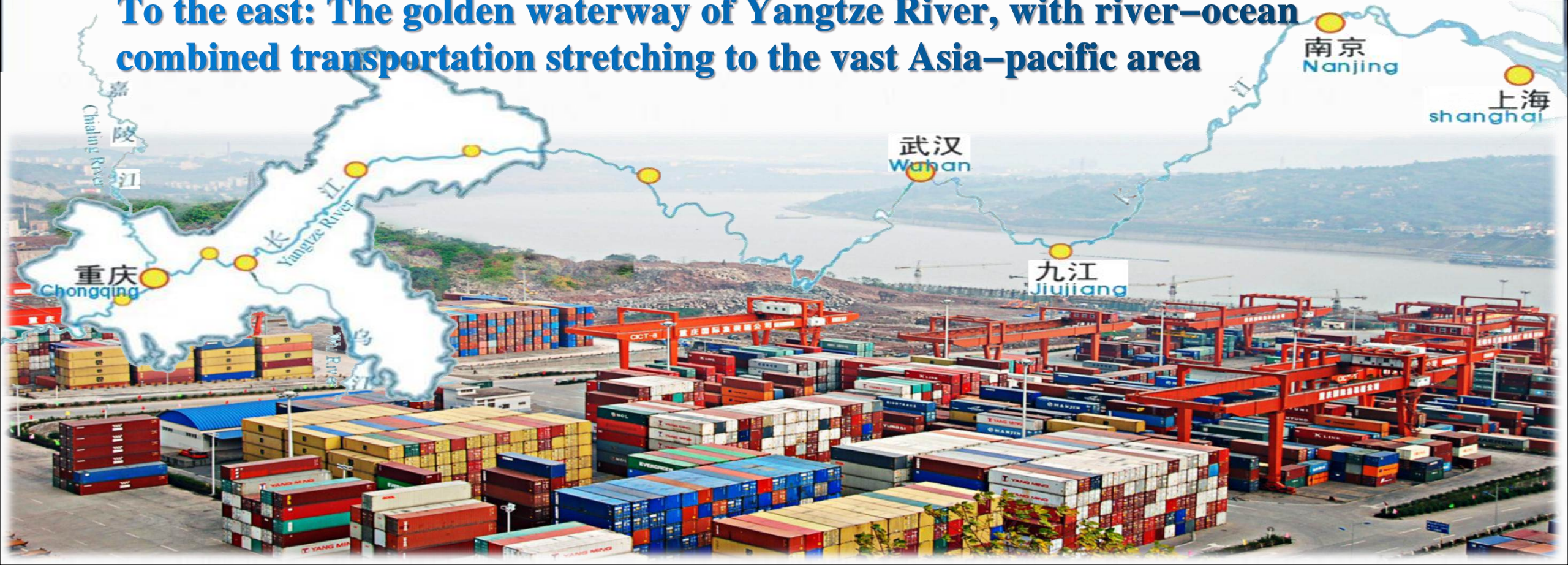
The NDRC (National Development and Reform Commission) released an Overall Plan of the New Western Land-sea Corridor on August 15, stating that a cost effective, efficient, convenient, green and safe western land-sea corridor will be mostly completed by 2025, with a number of large railway projects finished for operation and major highway bottleneck removed. **The Corridor will be fully built by 2035.**





# *Opportunity:* A tie-in point of the BRI and the Yangtze River Economic Belt

To the east: The golden waterway of Yangtze River, with river-ocean combined transportation stretching to the vast Asia-pacific area





## To the west: The Yuxin'ou international logistic line

➤ all the way to Duisburg in Germany

➤ 20+ less days than maritime option







## To the south: railway–ocean combined transportation to ASEAN and southeast Asia

